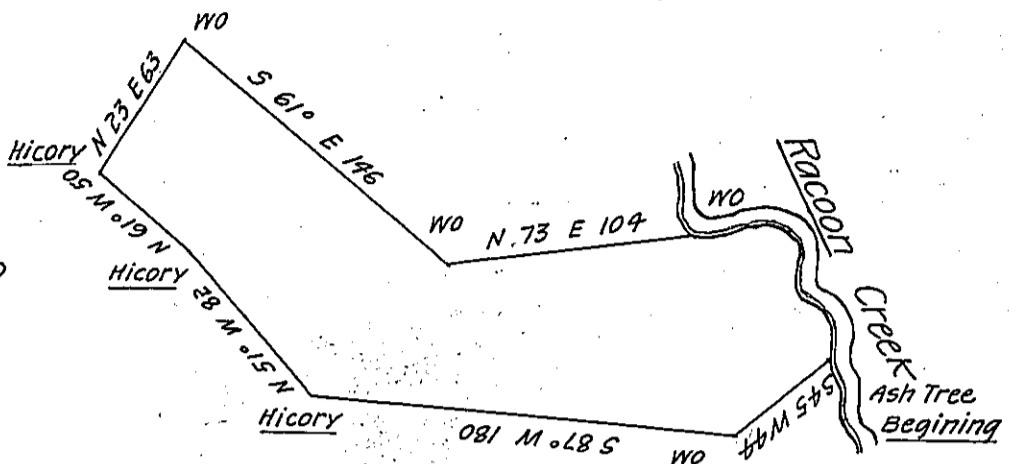


Robert Kennedy

Richard Vaughan

Courses and distances up  
the Creek from  
White Oak to Ash.

N 82° E 22  
S 32° E 34  
S 24° E 32  
S 85° E  $\frac{12}{100}$



Robert Thompson

The above is a draught of a survey made the 10<sup>th</sup> December  
1794 in pursuance of a warrant granted James Rankin on the  
14<sup>th</sup> day of August 1793 situated on the waters of Racoon Creek  
in Washington County containing one hundred and thirty one  
acres and eleven perch<sup>s</sup> and allowance of six per centum.

Thomas Stokely D. S.

Daniel Brodhead Esq<sup>r</sup>

Surveyor General of Penn<sup>a</sup>

IN TESTIMONY that the above is a copy of the original remaining on file in  
the Department of Internal Affairs of Pennsylvania, made  
conformably to an Act of Assembly approved the 16th day of  
February, 1833, I have hereunto set my Hand and caused  
the Seal of said Department to be affixed at Harrisburg,  
this eleventh day of June 1906.

*George B. Brown*  
Secretary of Internal Affairs